

WILTSHIRE POLICE

# CPT Area Briefing

Marlborough Area Community Policing Team

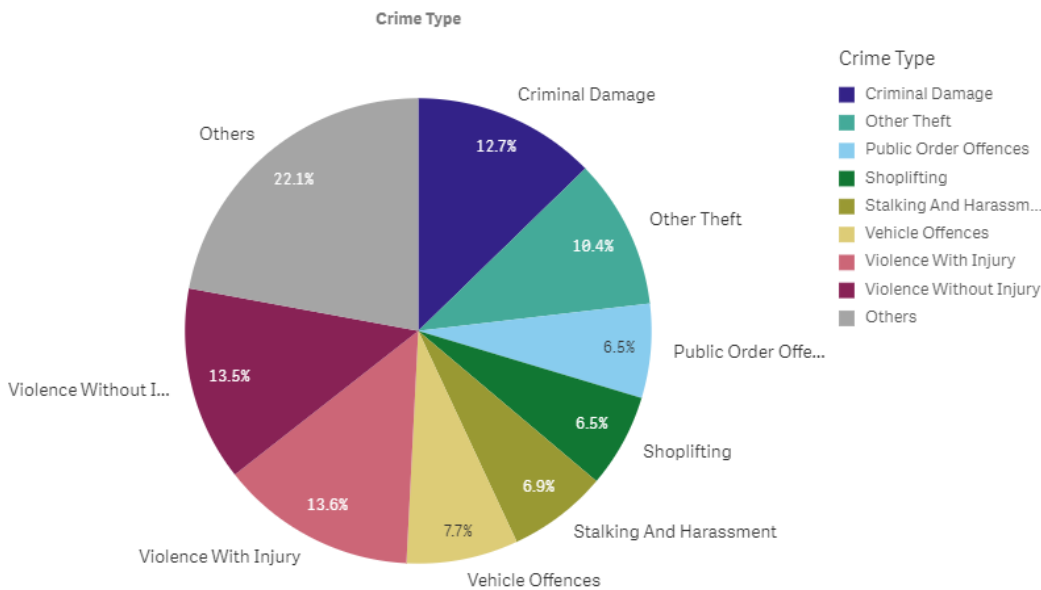


Proud to serve and protect our communities

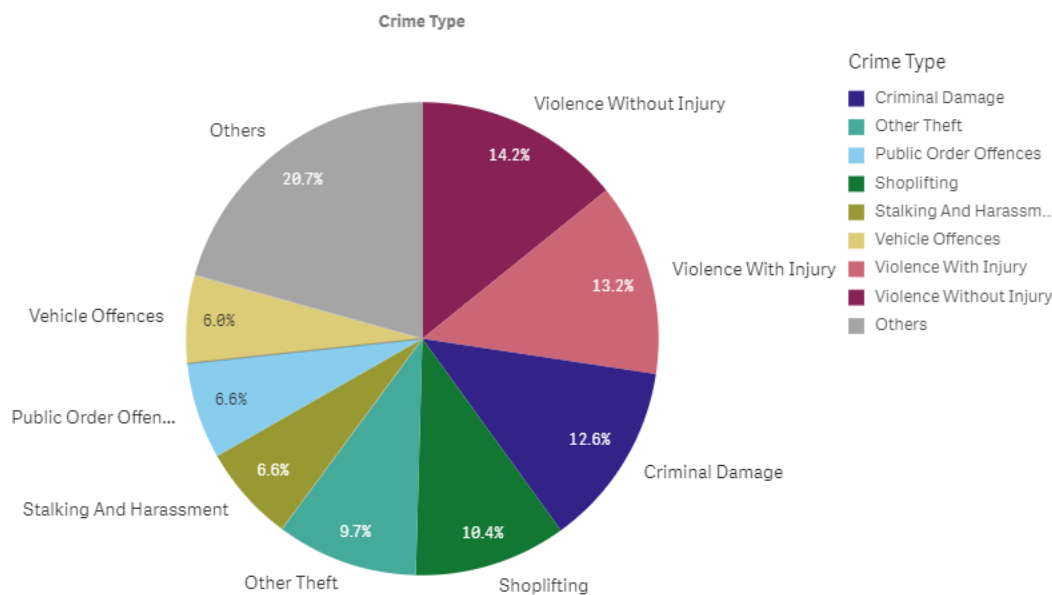
January/February 2020

## PERFORMANCE

Your Area - Five Highest Crime Groups (Previous 12 months)



Force Area - Five Highest Crime Groups (Previous 12 months)



Wiltshire East CPT - crime and incident demand for the 12 months to November 2019

WILTSHIRE POLICE

# CPT Area Briefing

Marlborough Area Community Policing Team



**Proud** to serve and **protect** our communities

January/February 2020

WILTSHIRE POLICE

# CPT Area Briefing

Marlborough Area Community Policing Team



Proud to serve and protect our communities

January/February 2020

## Force-wide

- Wiltshire Police has had an increase in the volume of recorded crime by 4.5% in the 12 months to November 19 and continues to have one of the lowest crime rates in the country.
- Our service delivery remains consistently good.
- In November, we received 8,234 999 calls which we answered within 5 seconds on average and 11,604 CRIB calls which we answered within 1 minutes 28 seconds on average.
- In November, we also attended 1,594 emergency incidents within 10 minutes and 30 seconds on average.
- Wiltshire Police has seen a 10% reduction in vehicle crime and 9% in residential burglaries in the 12 months to November 2019.
- The Crime Survey of England & Wales recently ranked Wiltshire as one of the top forces (78.3%) nationally for public confidence. It covers the 12 months to March 2019.  
The publication can be found here: [WWW.CRIMESURVEY.CO.UK](http://WWW.CRIMESURVEY.CO.UK)

For more information on Wiltshire Police's performance please visit:

PCC's Website - <https://www.wiltshire-pcc.gov.uk/article/1847/Performance>

HMICFRS Website - <https://www.justiceinspectorates.gov.uk/hmicfrs/police-forces/wiltshire/>

Police.uk - <https://www.police.uk/wiltshire>

WILTSHIRE POLICE

# CPT Area Briefing

Marlborough Area Community Policing Team

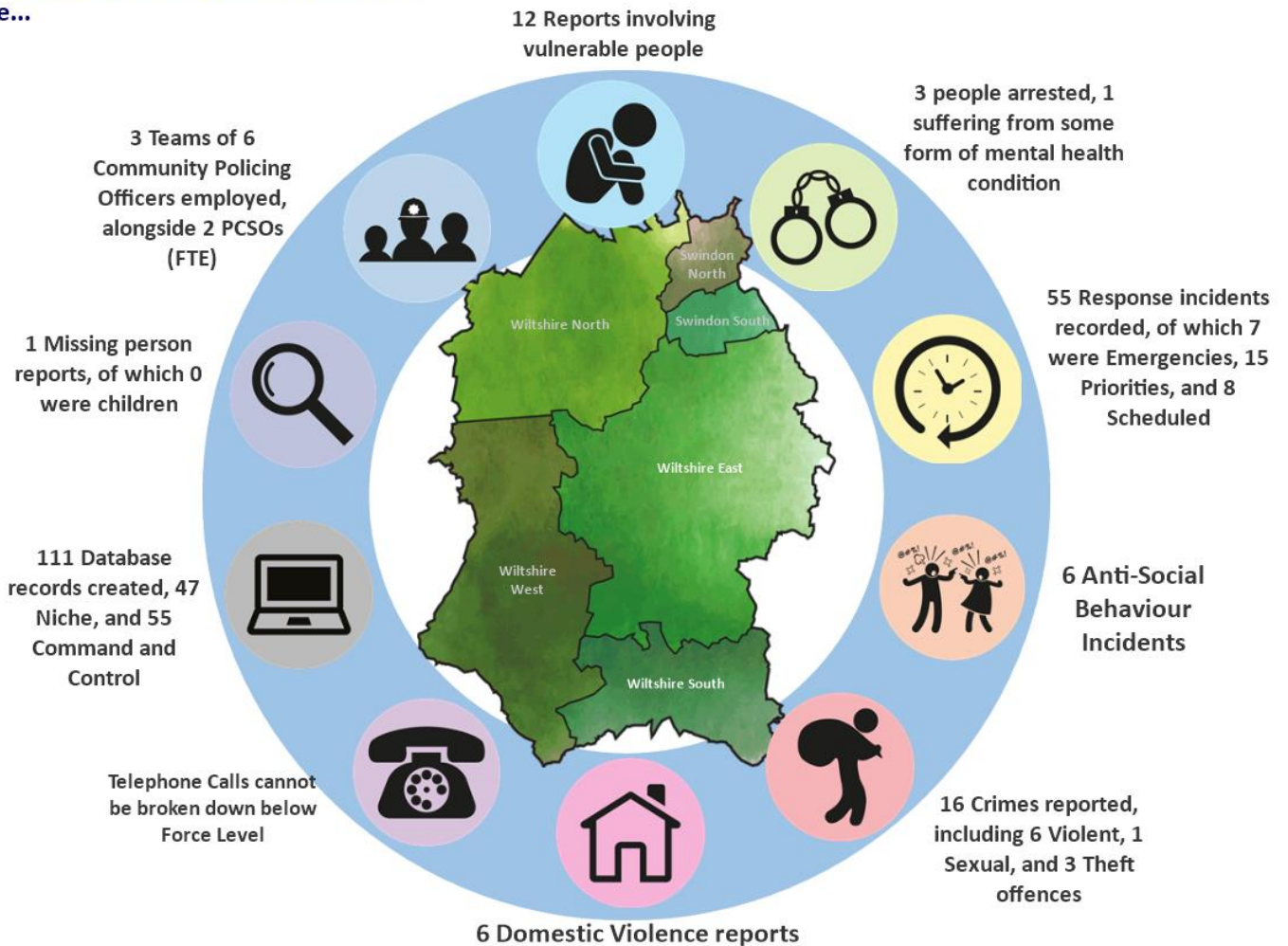


Proud to serve and protect our communities

January/February 2020

## Area specific

On an average day in Wiltshire East there were...



Wiltshire East CPT Demand Overview – 12 months to November 2019

### Incidents in Marlborough 01/11/2019-06/01/2020

- 10 reports of ASB
- 14 reports of Burglary
- 5 reports of Drugs
- 34 reports of theft
- 35 reports of violent crime
- 31 reports of criminal damage
- 4 reports of public order
- 26 reports of vehicle offences

WILTSHIRE POLICE

# CPT Area Briefing

Marlborough Area Community Policing Team



**Proud** to serve and **protect** our communities

January/February 2020



WILTSHIRE POLICE

# CPT Area Briefing

Marlborough Area Community Policing Team



Proud to serve and protect our communities

January/February 2020

## HIGH LEVEL CPT UPDATES:

*Rural Crime continues to be an issue within the area; patrols are in place to deter this.*

*Officers carried out 2x rural crime operations throughout November and December whereby 2 persons were arrested and dispersal powers used.*

*Shoplifting has historically been a problem within Marlborough because of this and leading up to the busy Christmas period, officers increased their visibility in the Town.*

*Officers carried out a shoplifting Operation over the first week of December which proved very successful.*

*Inspector Chris martin will be returning to the East sector in January with Pete Foster returning to his Sgt post. PS Tracey Holloway will return to Salisbury.*

*Officers have been patrolling London Road in order to monitor and deter the speeding. A number of people have been reported for speeding many of whom live in the local area.*

WILTSHIRE POLICE

# CPT Area Briefing

Marlborough Area Community Policing Team



Proud to serve and protect our communities

January/February 2020



WILTSHIRE POLICE

# CPT Area Briefing

Marlborough Area Community Policing Team



Proud to serve and protect our communities

January/February 2020

## YOUR CPT – Marlborough Area



Inspector Chris Martin



SGT Pete Foster

### Neighbourhood PC



PC Emily Grigor (Marlborough and Pewsey)

[Emily.Grigor@wiltshire.pnn.police.uk](mailto:Emily.Grigor@wiltshire.pnn.police.uk)

### PCSOs



PCSO Mark Braithwaite – Marlborough Town

[Mark.Braithwaite@Wiltshire.pnn.police.uk](mailto:Mark.Braithwaite@Wiltshire.pnn.police.uk)



WILTSHIRE POLICE

# CPT Area Briefing

Marlborough Area Community Policing Team



**Proud** to serve and **protect** our communities

January/February 2020



PCSO Melissa Camilleri – Marlborough Rural

[Melissa.Camilleri@Wiltshire.pnn.police.uk](mailto:Melissa.Camilleri@Wiltshire.pnn.police.uk)



PCSO Emily Johnson – Marlborough Town

[Emily.Johnson@Wiltshire.pnn.police.uk](mailto:Emily.Johnson@Wiltshire.pnn.police.uk)

Contact us on [CPEastWiltshire@wiltshire.pnn.police.uk](mailto:CPEastWiltshire@wiltshire.pnn.police.uk)

You can find out more about Wiltshire East CPT, including news stories and contacts for local officers, on our website: [www.wiltshire.police.uk/WiltshireEast](http://www.wiltshire.police.uk/WiltshireEast)

We also have Devizes Police Facebook & Twitter accounts where we promote our work, put out information, appeals and press releases.

WILTSHIRE POLICE

# CPT Area Briefing

Marlborough Area Community Policing Team



Proud to serve and protect our communities

January/February 2020

## LOCAL PRIORITIES

### Rural Crime Patrols -

It is imperative that we maintain a high visible presence within our rural county. As wintertime is fast approaching, we anticipate an increase in visitors to our countryside.

We will be aiming to regularly patrol our rural sites that unfortunately do become a target of vehicle and rural crime.

Operations have been carried out and suspects have been located and issued with a ban from the area.

### Priority 2:

#### Burglaries/Unexpected Callers –

As the season approaches we continue to receive reports regarding burglaries within the Devizes, Marlborough and Pewsey area. Whilst the number is reducing the likelihood that in the months leading up to December/January this number could increase.

Patrols are continuing at all times of day and night.

### Priority 3:

#### Theft by shoplifting -

During the busy Christmas shopping period and January sales theft by shoplifting increases. Operations and daily patrols will be carried out in order to deter these types of crime.

Patrols are continuing by both officers and PCSO's

WILTSHIRE POLICE

# CPT Area Briefing

Marlborough Area Community Policing Team



Proud to serve and protect our communities

January/February 2020

## HIGH LEVEL PCC UPDATES

- **Precept Consultation** – From 6 January, I will be consulting with residents and businesses in Wiltshire and Swindon on what they would be prepared to pay as part of their council tax bill next year's towards local policing. I am still waiting for notification from the Home Office on what our settlement will be in Wiltshire for 2020/21 and hope to be in receipt of this soon. I strongly encourage you to [submit your feedback on my website](#).

## HIGH LEVEL FORCE UPDATES

- We continue to implement **changes in our community policing teams** to better meet demand in our different patches. It is a phased approach and as of December the boundaries of our community policing teams changed with their names also changing to reflect the areas covered.

**The new list is:** Swindon Area CPT, Chippenham Area CPT, Royal Wootton Bassett Area CPT, Trowbridge Area CPT, Warminster Area CPT, Salisbury Area CPT, Devizes Area CPT and Amesbury Area CPT.

- **Changes to 101 system** – In mid-December the options available when members of the public call 101 have changed to allow for to be connected directly to some departments. They will also no longer be taking reports of shoplifting unless it is in progress, an offender is detained or there was violence to any members of the public or staff. Instead callers are encouraged to report the crime online and submit any available CCTV.

## GET INVOLVED

- You can keep up to date with the latest news in your area by signing up to our Community Messaging service – [www.wiltsmessaging.co.uk](http://www.wiltsmessaging.co.uk)
- You can follow your CPT on social media <https://www.wiltshire.police.uk/Followus>
- More information on your CPT area can be found here: [www.wiltshire.police.uk](http://www.wiltshire.police.uk) and here [www.wiltshire-pcc.gov.uk](http://www.wiltshire-pcc.gov.uk)

WILTSHIRE POLICE

# CPT Area Briefing

Marlborough Area Community Policing Team



**Proud** to serve and **protect** our communities

January/February 2020

## FEEDBACK/ACTIONS TAKEN